

///BODYCROSS

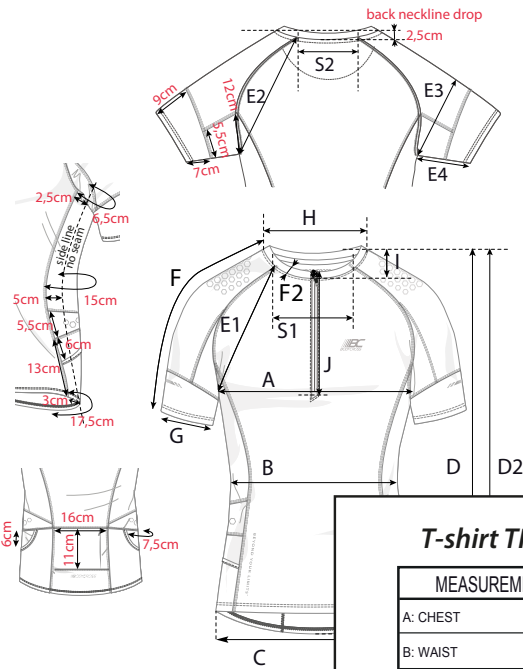
24, RUE MONDÉTOUR
7 5 0 0 1 P A R I S
TEL. +33 (0)1 70 61 48 03

© Modèles déposés, toute reproduction interdite / Registered designs, any reproduction prohibited



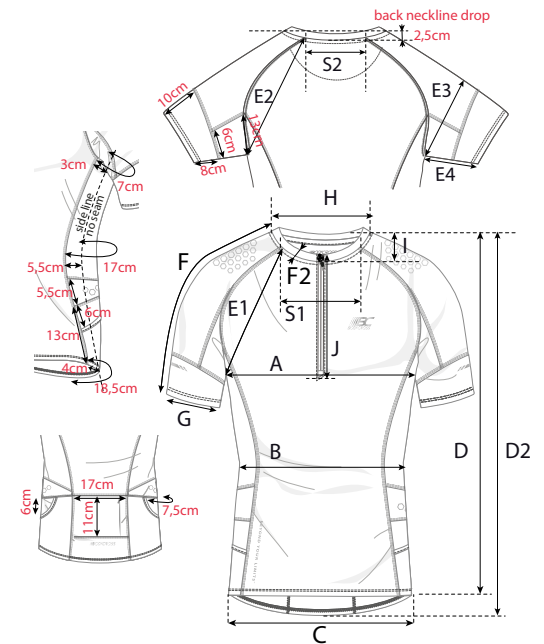
T-shirt TRAIL Femme

MEASUREMENTS	XS	S	M	L	XL	TOL +/- cm
A: CHEST	38	40	42	44	46	0,5
B: WAIST	32	34	36	38	40	0,5
C: BOTTOM WIDTH	40	42	44	46	48	0,5
D: FRONT TOTAL LENGTH	60,5	62	63,5	65	66,5	0,5
D2: BACK TOTAL LENGTH	63	64,5	66	67,5	69	0,5
E1: FRONT ARMHOLES	22,5	23,5	24,5	25,5	26,5	0,5
E2: BACK ARMHOLES	27	28	29	30	31	0,5
E3: SLEEVE WIDTH AT WIDEST	17	18	19	20	21	0,5
E4: UNDER SLEEVE LENGTH						0,5
F: SLEEVES LENGTH	30	32	34	36	38	0,5
F2: COLLAR BAND	1,2	1,2	1,2	1,2	1,2	0
G: BOTTOM SLEEVE WIDTH	12	12,5	13	13,5	14	0,5
H: COLLAR WIDTH INCLUDED COLLAR BAND	17	17,5	18	18,5	19	0
I : FRONT NECKLINE DROP INCLUDED COLLAR BAND	7,5	8	8,5	9	9,5	0,5
J : FRONT ZIPPER LENGTH	22,5	22,5	22,5	23,5	23,5	0,5
S1: FRONT RAGLAN WIDTH	10	11	12	13	14	0,5
S2: BACK RAGLAN WIDTH	8	9	10	11	12	0,5



T-shirt TRAIL Homme

MEASUREMENTS	S	M	L	XL	TOL +/- cm
A: CHEST	46	48	50	52	0,5
B: WAIST	40	42	44	46	0,5
C: BOTTOM WIDTH	44	46	48	50	0,5
D: FRONT TOTAL LENGTH	68	70	72	74	0,5
D2: BACK TOTAL LENGTH	71	73	75	77	0,5
E1: FRONT ARMHOLES	25,5	26,5	27,5	28,5	0,5
E2: BACK ARMHOLES	30	31	32	33	0,5
E3: SLEEVE WIDTH AT WIDEST	19	20	21	22	0,5
E4: UNDER SLEEVE LENGTH					0,5
F: SLEEVES LENGTH	34	36	38	40	0,5
F2: COLLAR BAND	1,5	1,5	1,5	1,5	0
G: BOTTOM SLEEVE WIDTH	13	14	15	16	0,5
H: COLLAR WIDTH INCLUDED COLLAR BAND	18,5	19	19,5	20	0
I : FRONT NECKLINE DROP INCLUDED COLLAR BAND	8	8,5	9	9,5	0,5
J : FRONT ZIPPER LENGTH	24	24	25	25	0,5
S1: FRONT RAGLAN WIDTH	13	14	15	16	0,5
S2: BACK RAGLAN WIDTH	11	12	13	14	0,5



PLEASE MAKE SAMPLES SIZE «M»

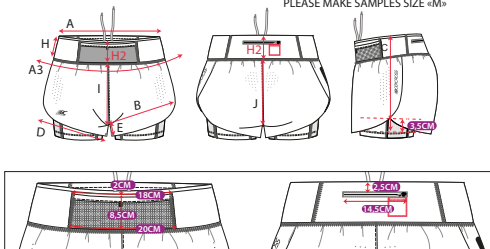


Short 2 en 1 Femme

SHORT MEASURES DETAILS

	XS	S	M	L	XL	TOL USINE +/-
A: TOP WAIST RELAXED	28	30	32	34	36	0,5
A3: BOTTOM WAIST EXTENDED	40	42	44	46	48	0,5
B: 1/2 THIGH WIDTH	32	33	34	35	36	0,5
C: TOTAL SHORT LENGTH	29,5	30,5	31,5	32,5	33,5	0,5
D: BOTTOM SHORT LEG WIDTH	30,5	31,5	32,5	33,5	34,5	0,5
E: SHORT INSEAM	6	6,5	7	7,5	8	0,5
I: FRONT CROTCH RISE	16	17	18	19	20	0,5
J: BACK CROTCH RISE (STRAIGHT LINE)	28	29	30	31	32	0,5
H: SIDE WAIST HEIGHT	9	9	9	9	9	0,5
H2: FRONT/BACK WAIST HEIGHT	10,5	10,5	10,5	10,5	10,5	0,5
BACK ZIPPER LENGTH	14,5	14,5	14,5	14,5	14,5	

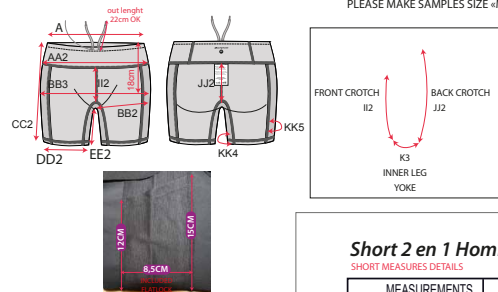
PLEASE MAKE SAMPLES SIZE «M»



INSIDE HALF-THIGH MESURES DETAILS

inside HALF-TIGHTS	XS	S	M	L	XL	
A: TOP WAIST RELAXED	28	30	32	34	36	0,5
AA2: BOTTOM WAIST WIDTH	34,5	36,5	38,5	40,5	42,5	0,5
BB2 : 1/2 THIGH	21,5	22,5	23,5	24,5	25,5	0,5
BB3 : HIP WIDTH	36	38	40	42	44	0,5
CC2: TOTAL LENGTH	31,5,5	32,5	33,5	34,5	35,5	0,5
DD2: BOTTOM LEG WIDTH	19	19,5	20	20,5	21	0,5
EE2: INSEAM	13	13,5	14	14,5	15	0,5
II2: FRONT CROTCH WITHOUT INNER LEG YOKE	11	12	13	14	15	0,5
JJ2: BACK CROTCH WITHOUT INNER LEG YOKE	16,5	17,5	18,5	19,5	20,5	0,5
KK3: INNER LEG YOKE	6	6	6	6	6	0
KK4: BOTOM INNER LEG YOKE	5	5	5	5	5	0
KK5: SIDE LEG YOKE INCLUDED FLATLOCK STITCH	8,5	8,5	8,5	8,5	8,5	0

PLEASE MAKE SAMPLES SIZE «M»

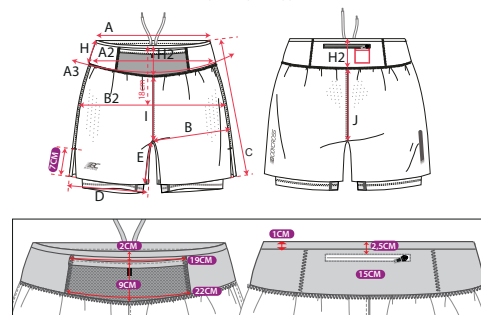


Short 2 en 1 Homme

SHORT MEASURES DETAILS

MEASUREMENTS	S	M	L	XL	TOL USINE +/-
A: TOP WAIST RELAXED	33	35	37	39	1
A2: BOTTOM WAIST	38,5	40,5	42,5	44,5	1
A3: BOTTOM WAIST EXTENDED	46	48	50	52	1
B: 1/2 THIGH WIDTH WITHOUT INNER LEG YOKE	31,5	32,5	33,5	34,5	1
B2: HIP	52	54	56	58	1
C: TOTAL SHORT LENGTH	36	38	40	42	1
D: BOTTOM SHORT LEG WIDTH	27,5	28,5	29,5	30,5	0,5
E: SHORT INSEAM	14,5	15,5	16,5	17,5	0,5
I: FRONT CROTCH RISE MEASURE STRAIGHT LINE	17,5	18,5	19,5	20,5	0,5
J: BACK CROTCH RISE MEASURE STRAIGHT LINE	26	27	28	29	0,5
H: SIDE WAIST HEIGHT	9,5	9,5	9,5	9,5	0
H2: FRONT/BACK WAIST HEIGHT	10,5	10,5	10,5	10,5	0
BACK ZIPPER LENGTH	15	15	15	15	0

PLEASE MAKE SAMPLES SIZE «M»



INSIDE HALF-THIGH MESURES DETAILS

inside HALF-THIGHTS	S	M	L	XL	TOL USINE +/-
BB2 : 1/2 THIGH	23	24	25	26	0,5
BB3 : HIP WIDTH	41	43	45	47	0,5
CC2: TOTAL LENGTH	38,5	40,5	42,5	44,5	0,5
DD2: BOTTOM LEG WIDTH	17,5	18	18,5	19	0
EE2: INSEAM -ON INNER LEG SEAM	15	16	17	18	0,5
II2: FRONT CROTCH WITHOUT INNER LEG YOKE	13,5	14,5	15,5	16,5	0,5
JJ2: BACK CROTCH WITHOUT INNER LEG YOKE	20	21	22	23	0,5
KK1: FRONT YOKE WIDTH WITHOUT INNER LEG YOKE	11	11,5	12	12,5	0
KK2: BOTTOM YOKE WIDTH WITHOUT INNER LEG YOKE	6	6,5	7	7,5	0
KK3: INNER LEG YOKE	8	8	8	8	0
KK4: BOTOM INNER LEG YOKE	6,5	6,5	6,5	6,5	0

noted I inside half-thigh should be 2,5cm longer than short

